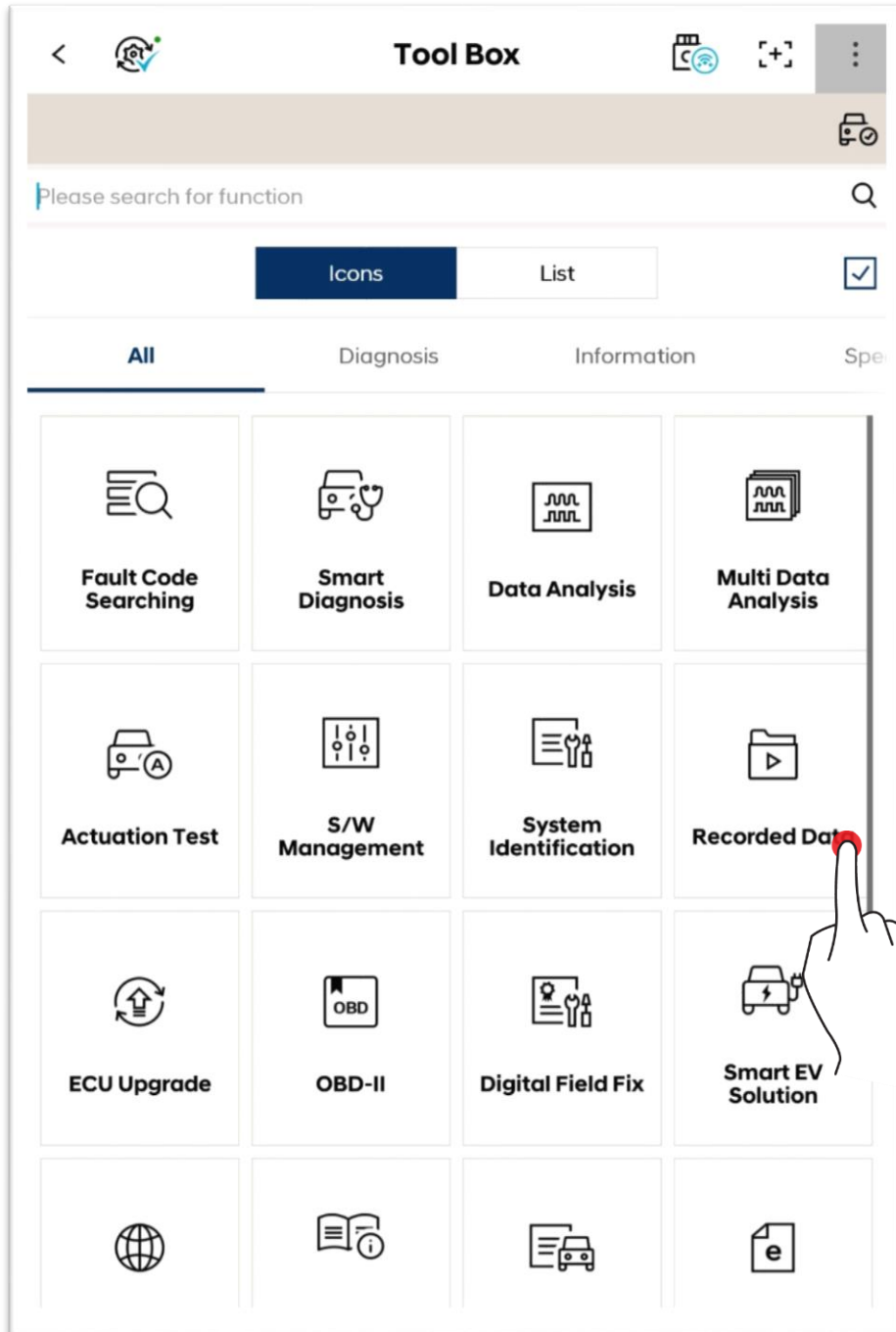


Tool Box - Recorded Data

You can view the data saved in tablet PC, and also copy the driving data saved in VCI II.



Basic Operation

The user can view, share or delete the data saved in tablet PC based on the user's need.

The screenshot displays the 'Recorded Data' application interface. At the top, there is a navigation bar with a back arrow, the title 'Recorded Data', and icons for refresh and zoom. Below this is a 'Vehicle Selection' bar with a car icon. The main area is divided into 'Local' and 'Data Copy' sections. A breadcrumb path is shown: 'NvciData > Record > HYUNDAI > SONATA(YFA) > Q2552522552255225'. Below the breadcrumb is a 'Recorded Data List' header with a list icon on the left and a checkmark icon on the right. The list contains a table with two columns: 'Record' and 'File Name'. The 'Record' column has expand/collapse icons, and the 'File Name' column lists image files. At the bottom, there is an 'Open' button.

Record	File Name
Record	
HYUNDAI	Image_20210602_104021.png
ETC	Image_20210602_104025.png
SONATA(YFA)	Image_20210602_104037.png
Q2552522552255225	Image_20210602_104043.png

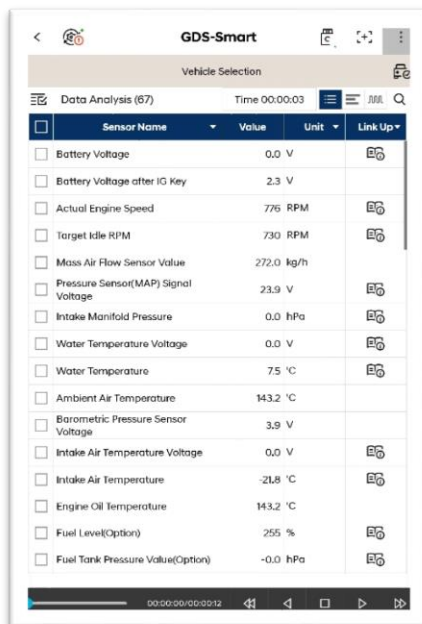
Annotations:

- Spread/fold: Points to the list icon in the 'Recorded Data List' header.
- Share/delete: Points to the checkmark icon in the 'Recorded Data List' header.
- Open a saved data: Points to the 'Open' button at the bottom.

Open Files

Saved Data File (.GSR)

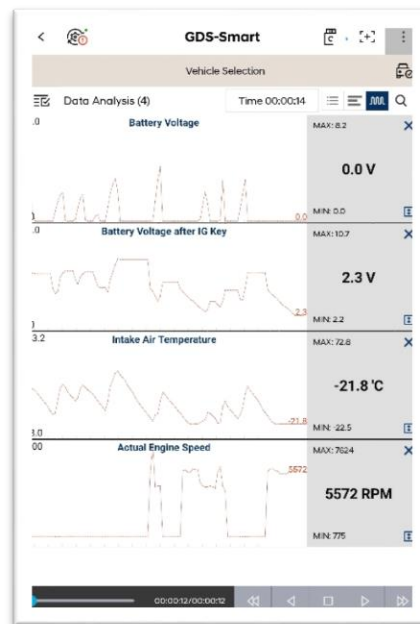
You can check the data in Text Mode and Graph Mode.



The screenshot shows the 'Text Mode' interface of GDS-Smart. It displays a list of 67 sensors with their current values and units. The interface includes a search bar, a list of sensors with checkboxes, and a 'Link Up' button for each sensor.

Sensor Name	Value	Unit	Link Up
Battery Voltage	0.0	V	
Battery Voltage after IG Key	2.3	V	
Actual Engine Speed	776	RPM	
Target Idle RPM	730	RPM	
Mass Air Flow Sensor Value	272.0	kg/h	
Pressure Sensor(MAP) Signal Voltage	23.9	V	
Intake Manifold Pressure	0.0	hPa	
Water Temperature Voltage	0.0	V	
Water Temperature	75	°C	
Ambient Air Temperature	143.2	°C	
Barometric Pressure Sensor Voltage	3.9	V	
Intake Air Temperature Voltage	0.0	V	
Intake Air Temperature	-21.8	°C	
Engine Oil Temperature	143.2	°C	
Fuel Level(Optional)	255	%	
Fuel Tank Pressure Value(Optional)	-0.0	hPa	

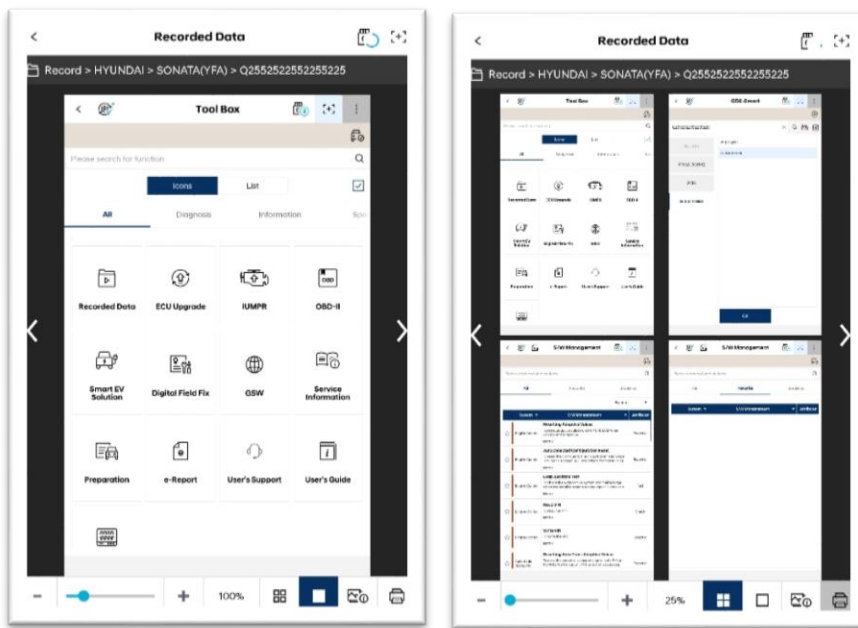
<Text Mode>



<Graph Mode>

Image Files

You can check the image files that are saved.

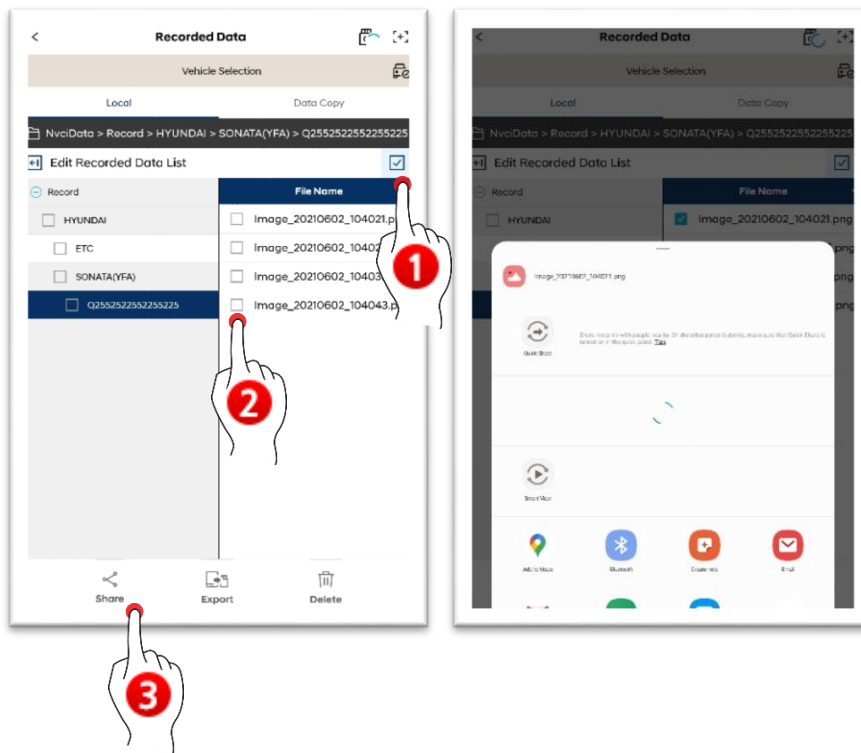


	Maximize/minimize
	View one image page
	View multiple image pages (maximum of 4 pages)
	Detailed information of images
	Print

Sharing, Export and Delete

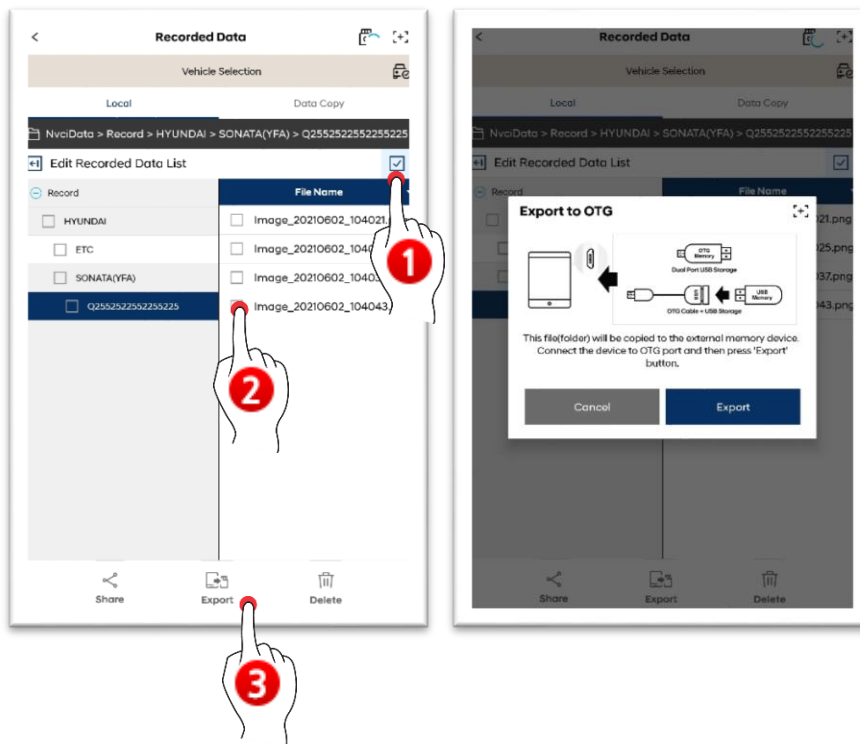
Sharing

You can share the data by using various methods supported by your tablet.

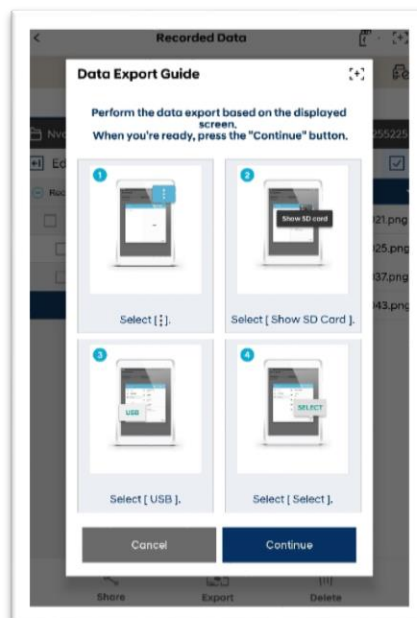


Export

You can export the data through an external saving device.

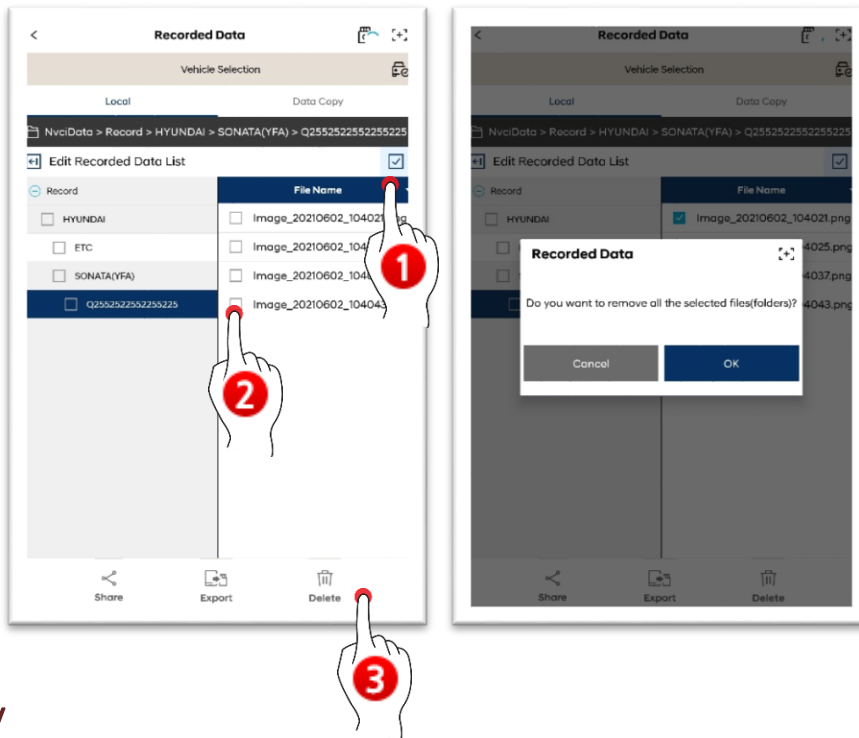


※ For exporting the data to USB or SD card, please refer to the following guide.



Delete

You can delete the data via Delete button.



Data Copy

You can copy and paste the data files saved in VCI to your tablet PC. Select a data to copy, and touch 'Data Copy' button.

※ It is saved in the file path of NvciData/Record of internal storage device.

